
Parcelle N° 16

souterrain de 28 places et 4 places extérieures

Date: 17.05.2024

AIELER 94 ARCHITECTURE SA

Collaborateurs responsables: G. Tomier - L. Cistellini

Projet d'enquête

Bâtiment A & B

Complais - surcomplais - loiture

354.003

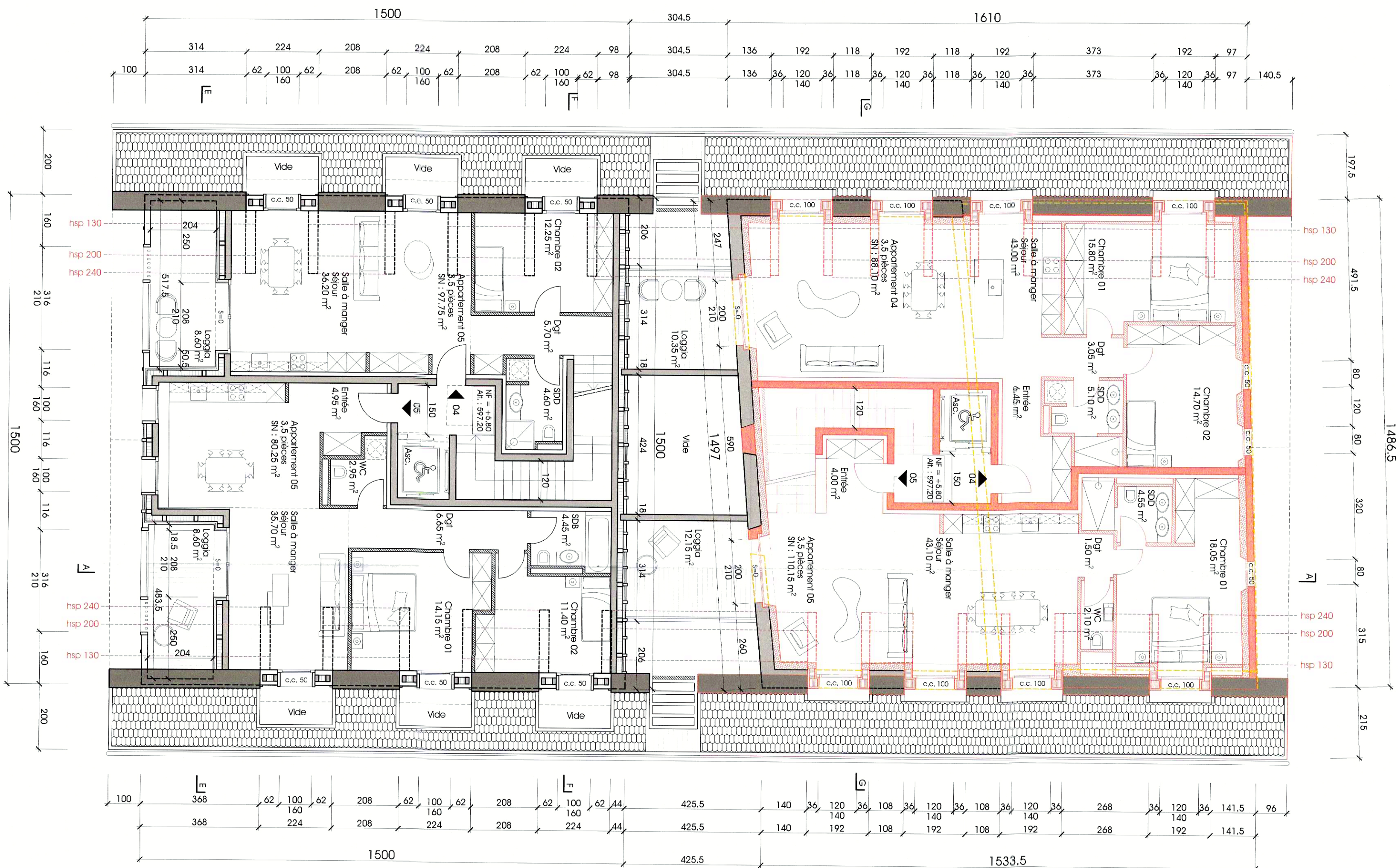
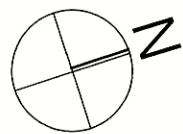
"M. Baudet Jean-Claude

"MOVITO SARL

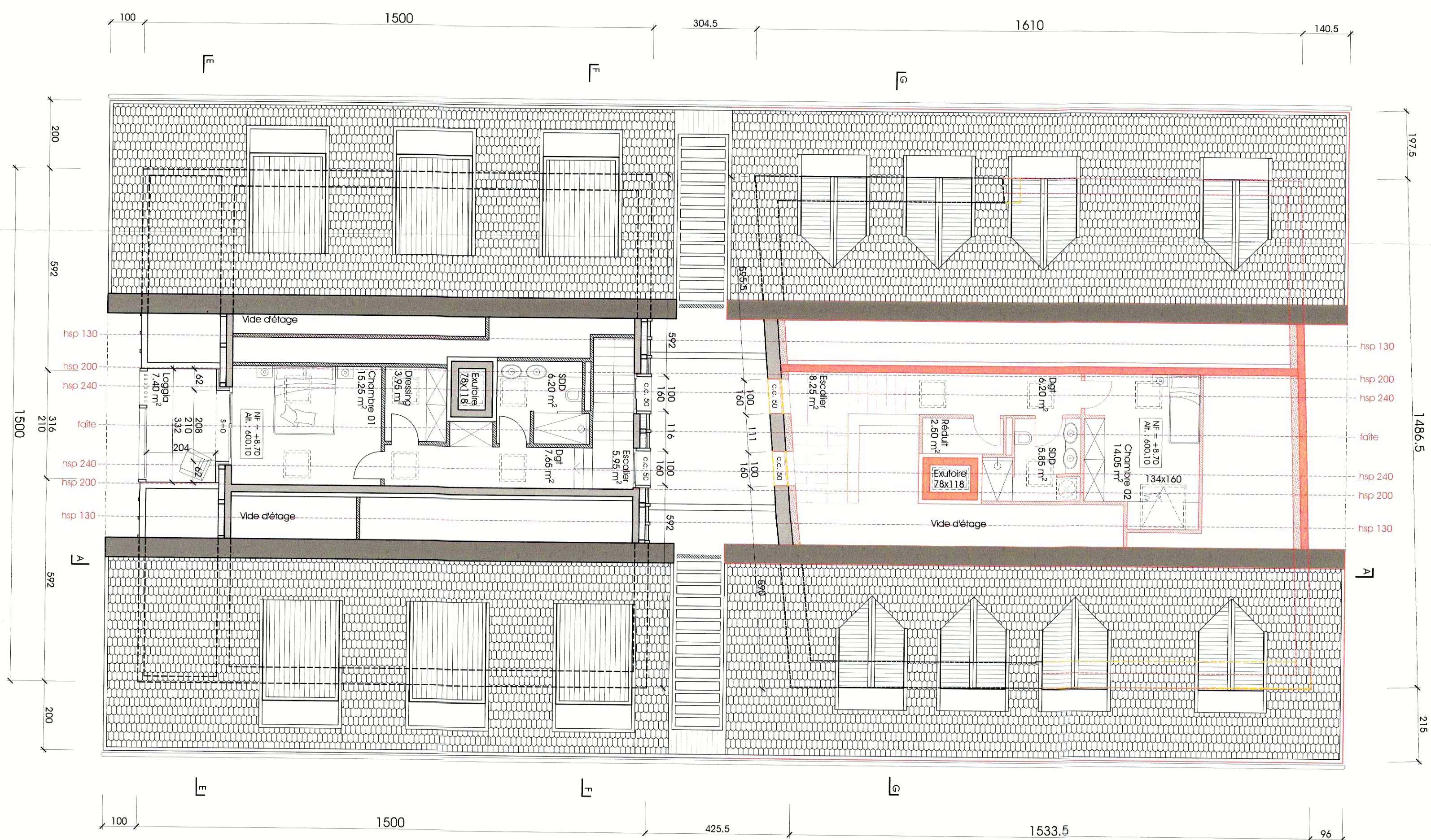
" Atelier 94 Architecture SA "

MOVITO SARL
Case postale 36
1273 Arzier-Le Muids
022 366 66 66

1273 Arzier-Le Muids
022 366 66 66
www.ateiers94.ch



Bât. A & B : $+5.80 = \text{alt.} 597.20$



Bắt. A & B : +8.70 = alt.600.10



Bât. A & B : Faîte + 12.74 = alt.604.14